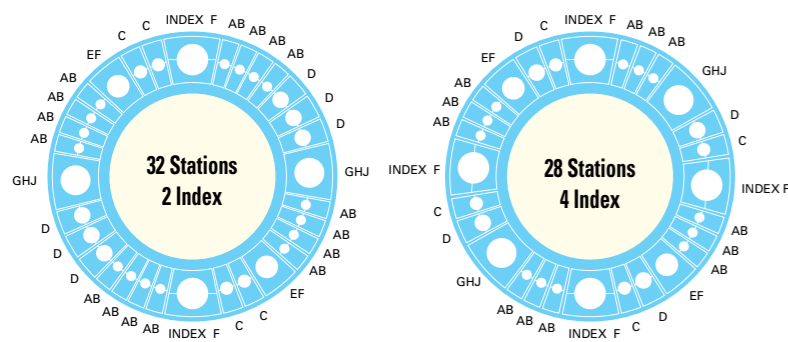


## Turret Layout



## Specifications

<b>Punching capacity</b>	200 kN (20.4 metric tons)	
<b>Maximum sheet thickness</b>	6.35 mm	
<b>Y-axis stroke</b>	1360 mm	
<b>X-axis stroke</b>	2550 mm	
<b>Maximum sheet size (YxX)</b>	<b>Without repositioning</b>	1250 mm × 2500 mm
	<b>With one reposition</b>	1250 mm × 5000 mm
<b>Throat depth</b>	1340 mm	
<b>Maximum allowable sheet weight</b>	150 kg	
<b>Hit rate 1.0t</b>	<b>25 mm pitch 8.3 mm stroke</b>	285 hpm
	<b>0.5 mm pitch 1.4 mm stroke</b>	900 hpm
<b>Simultaneous axis speed</b>	117 m/min	
<b>Punching accuracy</b>	±0.1 mm	
<b>Turret index speed</b>	35 rpm	
<b>Compressed air</b>	<b>Quantity</b>	100 NL/min
	<b>Pressure</b>	0.5 MPa
<b>Power supply</b>	19 kVA	

## Option

- Slug suction unit
- Varitool
- Varimark
- Deburring tool control

■ Safety Specification  
Machines built with CE-safety conformity are available as option.

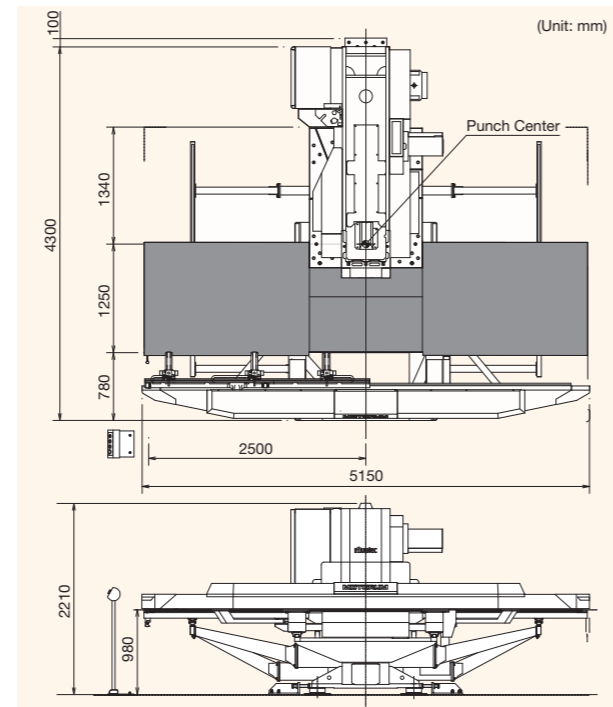
## Tooling Range

Range	Round punch	No. of stations	
		32ST/2 Index	28ST/4 Index
A	~12.7 mm	16	12
B	~25.0 mm		
C	~38.0 mm	4	4
D	~50.0 mm	6	4
E	~64.0 mm	2	2
F	~75.0 mm		
G	~89.0 mm	2	2
H	~105.0 mm		
J	~120.0 mm	2	4
INDEX	~75.0 mm		
VT	12 Stations		
VM	20, 40 Characters		

\* With Auto-index stations, Index tool (I/T), Varitool (VT) or Varimark (VM) can be selected as options in desired combination.

## Floor Plan

**Floor space** 5150 mm × 4300 mm  
**Height** 2210 mm  
**Weight** 12 tons



\* Machine appearance may differ to that shown in the catalogue pictures.  
\* All specifications are subject to change without advance notice.

## MOTORUM SERIES

# M2048TE

CNC Servo Motor Driven Ram Turret Punch Press



### MURATA MACHINERY, LTD. MACHINE TOOLS DIVISION

International Business Dept.  
2, Nakajima, Hashizume, Inuyama-shi, AICHI 484-8502, JAPAN  
TEL: +81-(0)568-61-3645 FAX: +81-(0)568-61-6455

**Headquarters**  
136, Takeda-Mukaihiro-cho, Fushimi-ku, KYOTO 612-8686, JAPAN  
TEL: +81-(0)75-672-8138 FAX: +81-(0)75-672-8691  
http://www.muratec.co.jp  
e-mail info@muratec.co.jp

**MURATA MACHINERY USA, INC**  
2120 Queen City Drive, P.O.Box 667609, Charlotte, N.C. 28208, U.S.A.  
TEL: +1-704-875-9280 FAX: +1-704-392-6541  
http://www.muratec-usa.com

**MURATA MACHINERY EUROPE GmbH**  
Hanns-Martin-Schleyer-Strasse 3, D-47877, Willich, GERMANY  
TEL: +49-(0)2154-914-250 FAX: +49-(0)2154-914-283  
http://www.muratec-europe.de/  
e-mail info@muratec.de



### MURATA DO BRASIL COMERCIO E REPRESENTAÇÃO DE MÁQUINAS LTDA.

Estrada de Santa Isabel, 3383-KM 38.5,  
Itaquaquecetuba-SP, CEP 08599-000, BRASIL  
TEL: +55 (0)11-4648-6222 FAX: +55 (0)11-4648-6737  
http://www.muratec.com.br  
e-mail muratec@muratec.com.br

### MURATA MACHINERY (SHANGHAI) CO., LTD

[Registry Add]  
135 Fu Te Xi Yi Rd., Wai Gao Qiao Free Trade Zone,  
Pudong, Shanghai, CHINA  
[Contact Add]  
150 Xin Gao Rd., Qingpu Industrial Zone,  
Shanghai, 201700, CHINA  
TEL: +86-(0)21-6921-2300 FAX: +86-(0)21-6921-2330

**BEIJING BRANCH**  
Rm. 309 Yu Lin Bldg., Xiang Jun Nan Li Er Xiang Jia No.5,  
Chaoyang-qu, Beijing, 100020, CHINA  
TEL: +86-(0)10-6597-3048 FAX: +86-(0)10-6591-1795  
**GUANGZHOU BRANCH**  
Room 635, United Star Hotel, 172 Chang Gang Rd., C.,  
Guangzhou, 510250, CHINA  
TEL: +86-(0)20-8434-2882 FAX: +86-(0)20-8434-3463

### MURATA (THAILAND) CO., LTD.

896/14 S.V.City Building 1, 9th Floor, Rama 3 Road  
Bangpongpan, Yannawa, Bangkok 10120, THAILAND  
TEL: +66-(0)2294-7734-40 FAX: +66-(0)2294-7732

### PT. MURATA MACHINERY INDONESIA

Ruko Gyan Plaza D-4, Jl. Terusan Pasirkoja Blok 8, Bandung  
40222, INDONESIA  
TEL: +62-(0)22-6046633 FAX: +62-(0)22-6046612

### MEIBAN ENGINEERING TECHNOLOGIES PVT. LTD.

[An associate company of Murata Machinery, Ltd.]  
No 38, 7th Main, J.C. Industrial Estate, Yelachanahalli, Kanakapura Road,  
Bangalore -560 062 INDIA  
TEL: +91-(0)80-2686-0600 Fax: +91-(0)80-2686-0605  
http://www.meibanengg.com  
e-mail: office@meibanengg.com

# M2048TE

CNC Servo Motor Driven Ram Turret Punch Press

Muratec introduced the world's first servo driven punch press in 1994. Since then our industry leading technology has evolved to meet the next generations needs. Here is the latest in our award winning Motorum series!



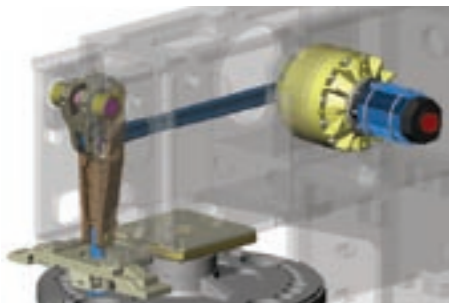
*“Reliability by Design”*

Utilization!  
Compactness!  
Functionality!

Note: Photographs in this catalogue include some options.

## Simple New Drive Ram Mechanism

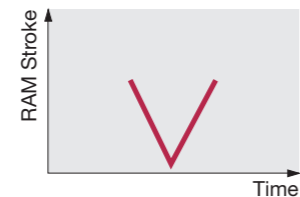
Muratec electric servo driven punch press has been evolving continuously! The newly engineered ram drive of M2048TE has become more simple and more rigid. With the elimination of the Cam Drive Cylinder, the servo motor can control the ram stroke directly, resulting in higher punch speeds and productivity. The reduction of the number of components has maximized stability during operations, decreasing maintenance and increasing longevity. The new drive has a more efficient motor that runs cooler and requires less energy.



## Ram Operation Patterns

Precise RAM control is delivered through the servo motor drive. This precise control enables Ram Operation Patterns for a wide range of processes.

### High speed punching:



The servo motor is driven alternately between hover height and bottom dead center with a back and forth motion. The hover height position is adjusted based on material type and thickness. This control of the ram stroke provides high speed punching and efficient productivity.

### Forming Operation:



Using variable servo motor control ram stroke between top dead center and bottom dead center, the best results and excellent performance in forming tool operation can be achieved. An important benefit of controlling the ram stroke is to specify a dwell time at bottom dead center and allow material flow during the forming operation.

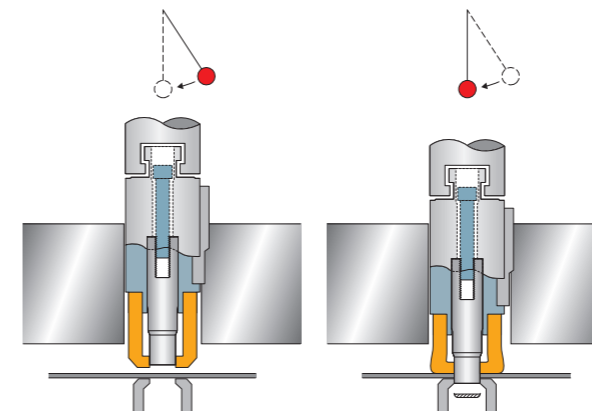
### Low noise operation:



Full control of the ram speed within one punching cycle achieves the ultimate reduction in noise and vibration.

## Push / Pull Wiedemann Style Tooling

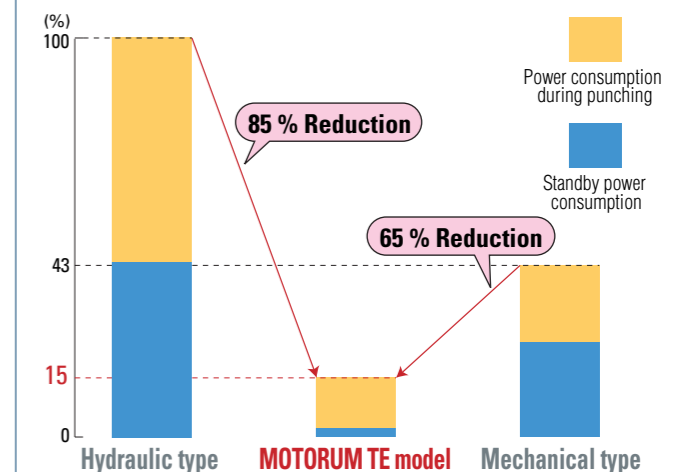
The positively engaged Push / Pull design of the ram is mechanically engaged to the punch holder during the complete punch cycle. This design guarantees a positive strip of the punch from the material. A proven design with over seventy five years of field use is simple, economical, durable and highly accurate.



## Energy Conservation & Low Running Cost

An environmentally friendly eco-machine, the Motorum servo motor drive mechanism uses energy only at the time of punching.

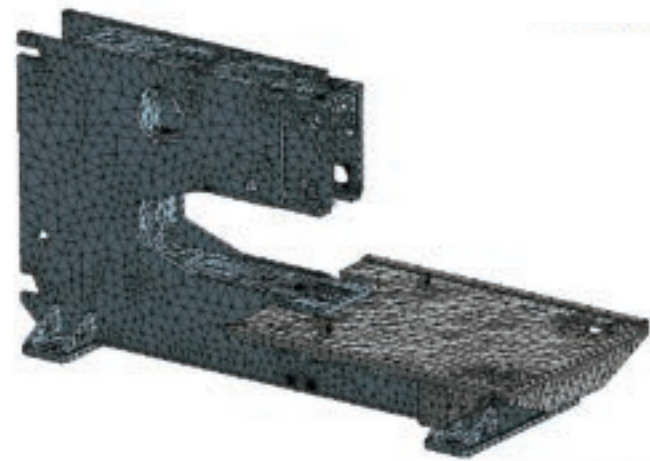
### Power Consumption Comparison





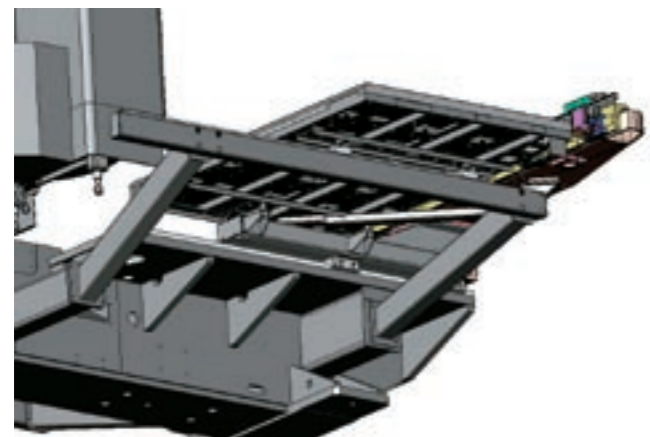
## Rigid Press Frame

12.5 % thicker side frames increases frame rigidity and improves stability in the punching process.



## Table Structure

By utilizing a two point LM guide and precision ball screws for the X and Y axes table motion, stability and improved reliability is assured.



## Crash Sensor

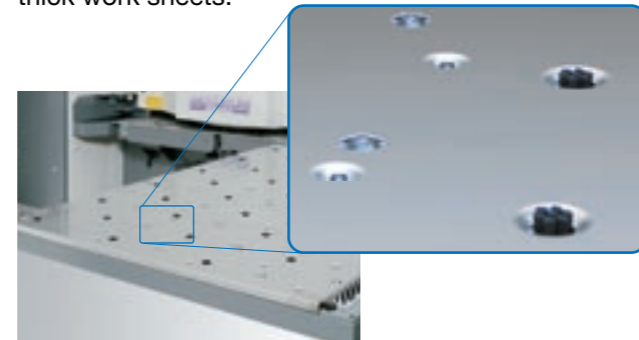
Prevent major damage to the machine. Crash sensors stop the machine when material curves upward toward the turret preventing a collision.



Designed for higher productivity, quality and operating ease

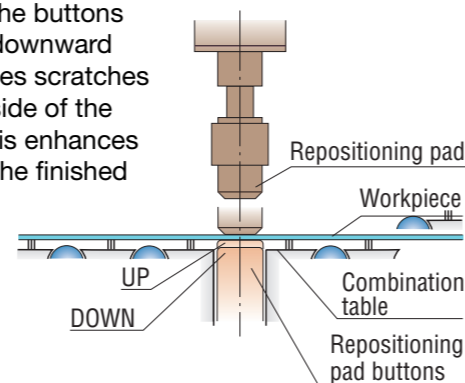
## Steel ball and brush combination table

Steel balls are effective for supporting thick work sheets, and brushes are located to keep work sheets flat. This combination table is suitable for thin and thick work sheets.



## Retractable Repositioning Pad Buttons

Retractable repositioning pad buttons are raised automatically for clamping the worksheet during the repositioning operation only. During normal punching when the worksheet is moving over the repositioning pad buttons, the buttons are retracted downward which eliminates scratches on the under side of the worksheet. This enhances the quality of the finished worksheet.



## Slug Suction Unit Option

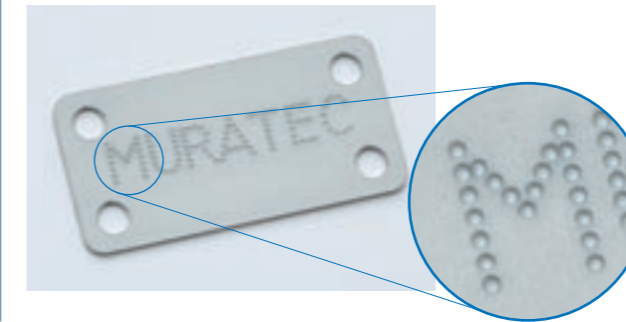
The slug suction unit enables better punching quality and minimizes slug pull-back problem for thin worksheets. This function is extremely useful while processing worksheets having scratch prevention films. The air suction helps to detach cut films from the workpiece.



M2048TE provides high speed processing with reliability and accuracy. This machine also raises overall productivity through process integration of deburring, forming, tapping and other processes, together with reduction of time needed to setup and program.

## High-speed Marking Mode

By using the high-speed marking mode, indentations are made in the material for easy product identification for next process in little time.



## High-Speed Auto-Index Mechanism

Index tool speed has been raised to 100 rpm. Reduction of positioning time for index tool angles, multi-tools and marking tools shortens production time.

## High-Speed Indexing

Fast indexing at any angle shortens production time for complex forms.

## Varitool Option

The Varitool is available in 12 tool configurations. Using Varitool in the Auto-index station increases the turret tool capacity. The 12-station tool configuration has tool sizes up to 12.7 mm dia.

Varitool  
12-station type



## Varimark Option

The Varimark is built-in with 20 or 40 standard alphanumeric and punctuation characters for stamping on the worksheet.

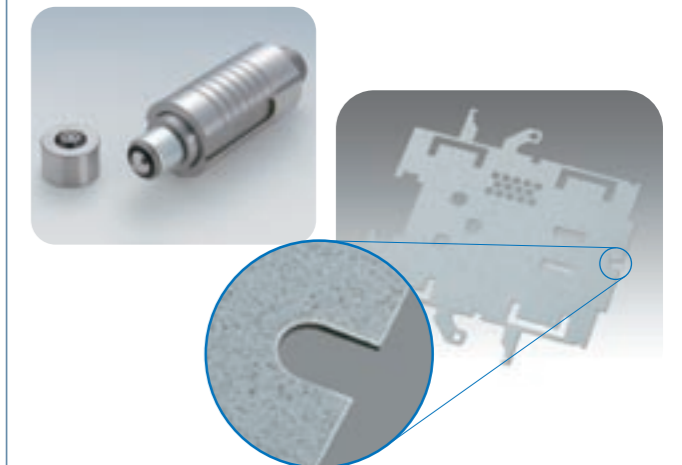
Varimark  
Stamping Character Size:  
2.1 mm x 3.2 mm  
(40 characters)  
3.2 mm x 5.0 mm  
(20 characters)



## Deburring operation Option

### Single Tool Deburring Operation

Designed by Muratec, two ball bearings pinch the upper and lower punched edge of the material rolling the burr back into the material leaving radius edges.



## Wilson Wheel Option



Rolling Offset



Rolling Shear

## Mate Precision Tooling Option



Sheet Marker



Roller Ball

# Intelligent Control Operations

## Scheduling Function

Scheduled job production guides the operator on a standalone machine. Program NC and scheduling data is automatically downloaded to the machine. Required tooling, material and work holder setup information is also displayed.



## Expanded Processing Condition List

The processing modes of 1000 tool types with 5 pattern setups can be registered for 30 material types and thicknesses. This allows for setting the detailed processing conditions of all the customer's tooling.



## Machine Control Functions

Various utilities are available to the operator. Optional log files can be viewed for machine operation and program start/finish times. Also machine alarm history can be viewed.



## Turret Monitor Function

Displays information on current tooling set in the turret. This allows tooling in scheduled jobs to be analyzed and it automatically determines when tool changes are required.



\*Above function requires Muratec original program format.

## Processing Simulation Function

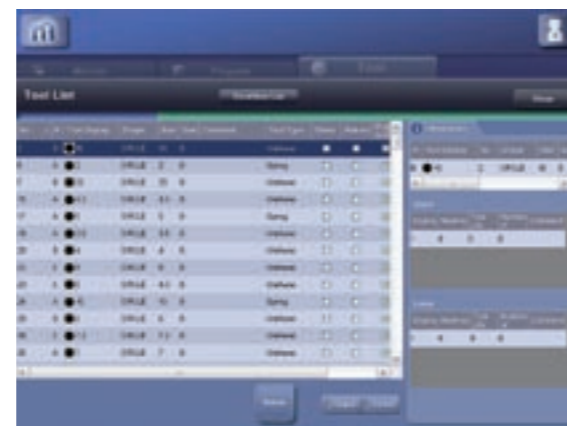
The current processing position during machine operation is displayed in red. This allows recognition at a glance of the punching sequence and production progress.



\*Above function requires Muratec original program format.

## Tool Management

A library of all the machine tooling is maintained on the control. The hit counts for all tools and dies are then tracked to allow scheduled maintenance when the hit counts exceed the predetermined maximum count.



\*Above function requires Muratec original program format.

